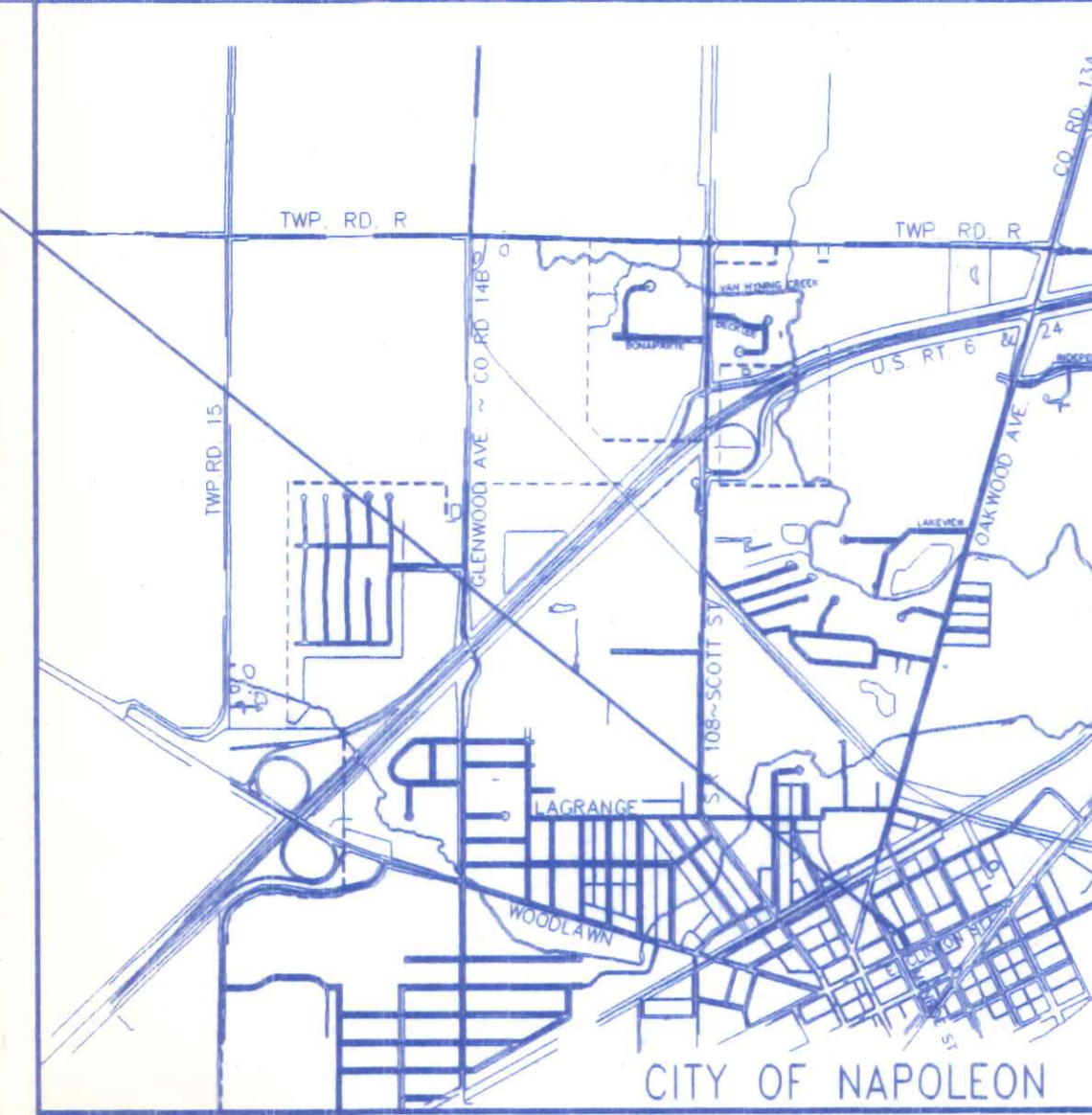


DATE	REVISIONS	BY

DIRECTORY: IND. WESTHOVEN DRAWING NAME: SIAugSite



LOCATION MAP

NEW DIMENSIONS
 1445 SCOTT STREET, P.O. BOX 174
 NAPOLEON, OHIO 43545
 (419) 599-8339
 DESIGN CONSTRUCTION & PLANNING ASSISTANCE
 DRAFTING

BUILDING DATA:

INDUSTRIALIZED UNITS:
 CLASSROOMS, PROPOSED
 OFFICE BUILDING, Existing
 USE GROUP : "E" EDUCATIONAL-PROPOSED
 USE GROUP : "B" BUSINESS-Existing
 CONSTRUCTION TYPE : 5-B
 AREA : ALLOWABLE: 7,200 SQ. FT. E or B (TABLE 503)
 PROPOSED: 1,545 SQ. FT.
 Existing: 1,410 SQ. FT.
 TOTAL PROPOSED: 2,955 SQ. FT.
 HEIGHT : ALLOWABLE: 20' - 1 STORY - "E"
 PROPOSED: 14± - 1 STORY
 Existing: 16± - 1 STORY
 MAXIMUM OCCUPANCY LOAD : 65 PERSONS, PROPOSED "E"
 12 PERSONS (Existing "B")
 MAXIMUM EXIT ACCESS TRAVEL DISTANCE : 200' ALLOWABLE
 MAXIMUM ALLOWABLE w/ONE EXIT : 75'
 60' PROPOSED (Est.)

PROPOSED
 DESIGN LOADS : FLOOR: 50 psf. MIN. LIVE plus DEAD LOAD
 ROOF: 30 psf. LIVE LOAD plus DEAD LOAD
 25 p.s.f. MIN. GROUND SNOW LOAD
 WIND: 80 mph wind speed,
 EXPOSURE "B"

SOIL BEARING CAPACITY: 2,500 p.s.f. Assumed (Class 4 Soils)
 SEISMIC INFORMATION:
 ZONE = 1
 Av = 0.07
 Aa = 0.07
 HAZARD EXPOSURE GROUP = 1
 PERFORMANCE CATEGORY = B
 SOIL PROFILE TYPE = S4
 BASIC STRUCTURAL SYSTEM = 1
 R = 6.5 Cd = 4.0
 ANALYSIS PROCEDURE = ELF, (1610.4)

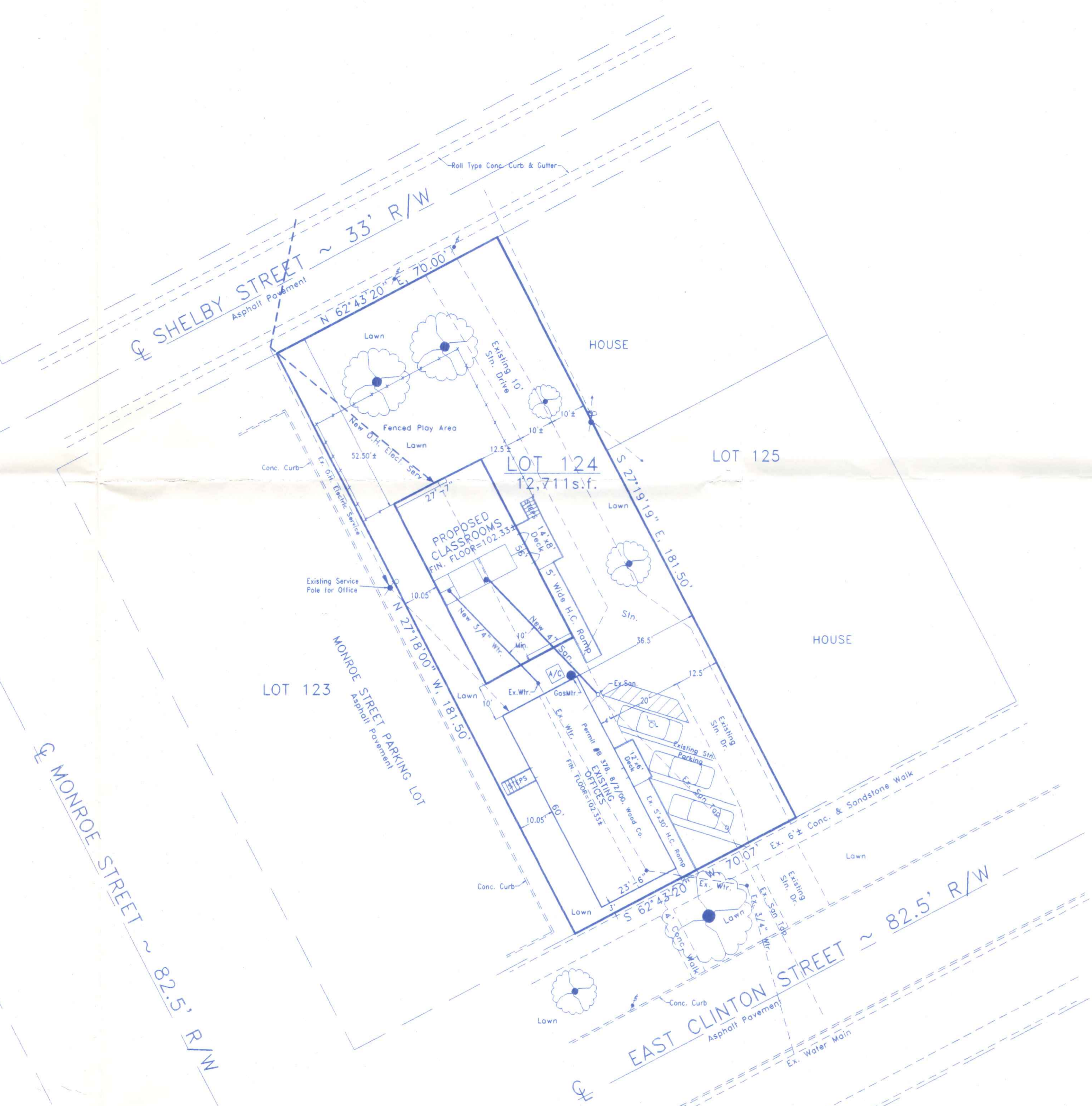
SITE PROPERTY DESCRIPTION
 LOT 124 OF PHILIP'S & STAFFORD'S
 2nd ADDITION, CITY OF NAPOLEON
 HENRY COUNTY, OHIO
 ZONING = "C-1" COMMERCIAL

ST. AUGUSTINE CHURCH & SCHOOL
 CITY OF NAPOLEON, OHIO
 PROPOSED SCHOOL CLASSROOMS
 SITE PLAN

DESIGN ENGINEER

DRAWN BY: R.D.S.
 DATE: APRIL, 2001
 HORIZ. SCALE: 1"=20'
 VERT. SCALE: N/A

PROJECT LOCATION



NOTES

- Utility quantities or lengths are estimated for information only and may vary depending on actual location of existing services.
- Verify location of existing utilities and elevations prior to commencement of construction.
- Owner shall provide construction inspection according to the City of Napoleon requirements and shall inform the City in advance of all testing.
- All utility trenches crossing paved areas, or within five (5) feet of pavement edges, shall be backfilled with granular material placed in layers not to exceed six (6) inches in compacted thickness.



OHIO UTILITIES PROTECTION SERVICE

The underground utilities shown hereon are only approximate. Some of the utilities were located by field observation, where possible, and the remaining utilities were derived from various records. Exact locations must be determined by the UTILITY COMPANIES. For exact locations, telephone the Ohio Utilities Protection Service (O.U.P.S.) toll free at 1-800-362-2764. (Telephone 2 working days before any digging.)

